

# INSTRUCTIONS FOR AUTHORS

## (Odd-numbered volumes - plant production)

### 1 Introduction

The Journal *accepts original scientific* articles from the fields of agronomy, horticulture, plant biotechnology, plant-related food-and-nutrition research, agricultural economics, information-science, and related research - odd-numbered volumes (for example: 97, 99) - in Slovenian or English language. Review articles are published in advance agreement with the editorial board. Extended versions of selected proceedings-papers can also be considered for acceptance, provided they include at least 30% of new original content, but the editorial board must be notified beforehand. If the article is based on a thesis or dissertation, the thesis-type must be indicated (BSc, MSc, PhD...), along with the role of the candidate and advisor, at the bottom of the first article page.

### 2 Structure of the article

- article title
- author's name(s): Name SURNAME(S)
- academic degree, if applicable (Ph.D., M.Sc., B.Sc. ...)
- authors' address in full (example: University of Ljubljana, Biotechnical Faculty, Agronomy Department, Jamnikarjeva 101, SI-1111 Ljubljana, Slovenia)
- e-mail (all authors)
- abstract (800 characters with spaces)
- keywords (up to 8)
- body of the article

Body of the article consists, preferably, of 5 main sections, numbered consecutively in Arabic numerals: 1 Introduction, 2 Materials and Methods, 3 Results and Discussion, 4 Conclusions, 5 References. Subsections, if needed, are numbered accordingly (2.1 ... 3.2.1). References must comply with the examples provided further in the text.

### 3 Body of the article

Formatting should be simple, without indentations, special margins, underlining, word division, or similar. The only font styles allowed are bold and italic. Italic is reserved for the Latin scientific taxonomy and special scientific characters, symbols and formulae (for example,  $a = 100$ ,  $p > 0,001$ , average  $\bar{x}$ , standard error  $s_e$ ). Avoid unnecessary abbreviations and acronyms. Lower case Times New Roman is used (capitalised accordingly, when appropriate), with the following font size: 9 (Abstract), 12 (Main body of the article), 10 (References), 10 (Table and Figure captions).

Use blank space between numerical value and unit symbols (125 m, 33.4 %, 15 °C), and no space with superscripted/subscripted numbers ( $12^3$ ,  $\text{km}^2$ ,  $a_5$ ). Decimal point is used in English texts.

International units of measurement are used. Use  $\text{kg ha}^{-1}$  instead of kg/ha. The unit of litre is spelled with lowercase symbol (l).

Use MS Word *Equation* Editor. Regular/italic font style is used as provided in the example:  $CIRG = (180 - h)/(L + \sqrt{a^2 + b^2})$ . Equations are centered and must be numbered if they are referred to in the text, with right-justified numbers (in round brackets) on the same line as the equation. Space is used in simple equations (for example:  $a = 100, p > 0.001$ ; do not write  $a=100, p>0,001$ ).

#### 4 Tables and Figures

All tables and figures are numbered and accompanied with a caption. Do not use automatic numbering of tables and figures. Times New Roman is used, font size 10.

Example:

Table 1: Text of the table ...

Do not use shading. Apply 1/2-point, single-line, solid-line borders. Use borders for rows and columns sparingly, only to set important data apart. No left and right (outer) borders are applied. Do not exceed one page. Use regular style (no bold formatting). Set column justification (left, centered, decimal) according to the example provided.

Table 1: The average ( $\bar{x}$ ) and standard error ( $Se$ ) of plum fruit mass (g), soluble solids ( $^{\circ}$ Brix) and firmness (N),  $n = 10$ , for cultivars 'Jojo' and 'Čačanska rodna'.

Cultivar	Time (no. of days)	Fruit mass (g)		Soluble solids ( $^{\circ}$ Brix)		Firmness	
		$\bar{x}$	Se	$\bar{x}$	Se	$\bar{x}$	Se
'Jojo'	0	25.2	1.4	9.1	0.1	59.0	11.4
	6	24.1	0.8	12.6	0.1	35.1	3.4
	12	31.3	1.5	10.6	0.4	42.2	7.8
	18	29.4	1.2	11.4	0.5	32.9	1.8
'Čačanska rodna'	0	23.1	1.1	11.4	0.3	34.7	4.1
	6	22.3	0.6	13.0	0.2	29.7	4.6
	12	22.6	0.4	13.6	0.3	22.2	2.2
	18	25.7	1.1	15.1	0.4	21.3	3.6

Figures (photographs, maps, graphs etc.) are numbered separately and consecutively. The caption is placed below the figure. Do not use automatic numbering.

Example:

Figure 1: Text of the figure ...

Set the resolution to 300 DPI, preferably in JPG or TIFF format. Black and white photographs are preferred.

Graphs are black and white. Different shades of gray must be clearly separated and distinguishable in print. Use Arial style (regular) everywhere in the graph (Example). Font size must be adjusted to the size of the figure. It must not exceed the general font size of the

text, in the final inserted version (but should not be less than 75 % of the text size). No borders are applied. The units are shown in round brackets.

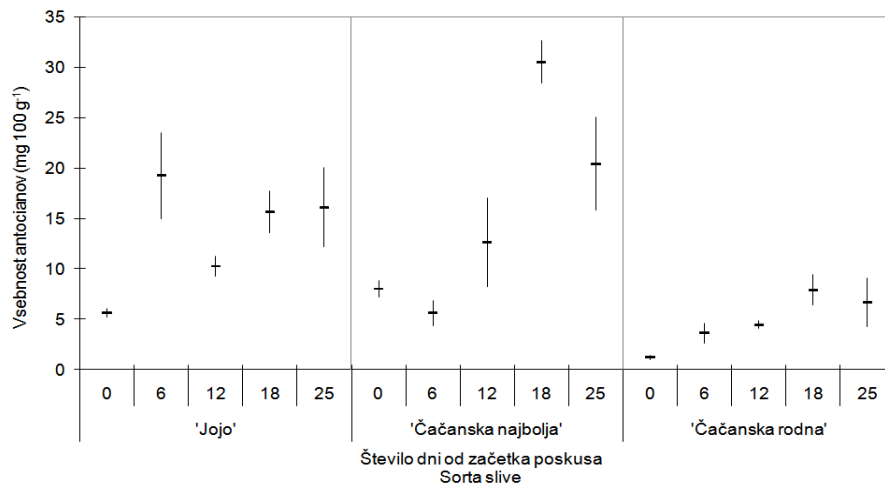


Figure 1: text of the figure ...

## 5 References

In the body of the text, use the following style for citations: one author: (Surname, year), two authors: (Surname and Surname, year), three or more (Surname et al., year). The final list of references is alphabetical and is not numbered. Two (or more) same-year references by the same author are indicated by consecutive small letters, following the year, for example: Surname N. 1997a. Title of the article ...

Examples:

Arditti J. 2002. Fundamentals of orchid biology. New York, John Wiley & Sons: 712 str.

Food safety risk analysis: A guide for national food safety authorities. FAO/WHO. 2006. Rome, Food and Agriculture Organization: 119 str.

<ftp://ftp.fao.org/docrep/fao/009/a0822e/a0822e00.pdf> (oktober 2007) (5. avg. 2009)

Hinnen M.G.J., Pierik R.L.M., Bronsema F.B.F. 1989. The influence of macronutrients and some other factors on growth of *Phalaenopsis* hybrid seedlings *in vitro*. *Scientia Horticulturae*, 41:105-116  
<http://www.sciencedirect.com/science/article/pii/030442388990054X> (15. jun. 2011)

ISO 17103. 2009. Agricultural machinery. Rotary disc mowers, rotary drum mowers and flail mowers. Test methods and acceptance criteria for protective skirts: 4 str.

Leštan D. 2009. The bio-accessibility assessment of heavy metals in contaminated soils in residential areas in Mezica valley, Slovenia. V: Trace elements in the food chain. Deficiency or excess of trace elements in the environment as a risk of health. Szilágyi M., Szentmihályi K. (eds.). Budapest, Working Committee on Trace Elements of the Complex Committee, Hungarian Academy of Sciences: 212-216

Polok K., Jacobsen H.J. 2011. PCR identification of *rpgip1* transgene in *Pisum sativum* L. *Acta agriculturae Slovenica*, 97, 3: 167-177

Tang C.Y., Chen W.H. 2007. Breeding and development of new varieties in *Phalaenopsis*. V: *Orchids Biotechnology*. Chen W.H., Chen, H.H. (eds.). Singapore, World Scientific Publishing: 1-22

## 6 Submission

Manuscripts are submitted via e-mail. They must be proof-read and checked for language errors before submission. A separate copyright release statement signed by the author(s) must also be submitted.

Copyright release statement:

The undersigned authors transfer all copyright ownership of the manuscript (manuscript title) to *Acta Agriculturae Slovenica* in the event the work is published. The undersigned authors warrant that the manuscript is original, is not under consideration by another journal, and has not been previously published.

The manuscripts are peer-reviewed. The decision on manuscript and comments by the referees and the editorial team are sent to the corresponding author, or all authors, if requested. Revised manuscripts in response to comments must be returned in 10 days, via e-mail. Final pdf proofs of accepted manuscripts are sent to the corresponding author, for final corrections, before the article is printed. Slovenian-language translation of selected bibliographic elements, for example the title, abstract and keywords, will be provided by the editorial board

Manuscripts are accepted throughout the year.